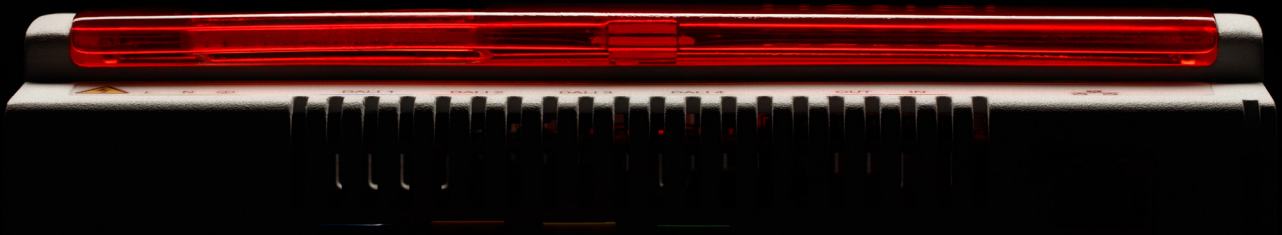


Helvar

**IMAGINE
ENDLESS POSSIBILITIES**



950 SOLUTION SPECIFICATION SHEET



HELVAR IMAGINE 950 SOLUTION SPECIFICATION SHEET

HELVAR IMAGINE brings wellbeing and intelligence into your space, offering efficiency and scalability for a wide variety of applications. Imagine builds upon industry standards for easy installation and integration to provide a truly leading lighting control and management solution.

THE 950 ROUTER has been designed to set a new benchmark for lighting control products. It takes the great benefits of the Imagine solution such as wellbeing, efficiency, intelligence and delivers this as an easy to install and scalable product which can be used in wide variety of applications.



KEY BENEFITS AND FEATURES

Market leading DALI capacity

The most DALI connectivity in 1 hardware (application controller)

- Fast installation and reduced install cost
- Easy to scale
- Reduced complexity
- Easy to manage

Efficient to Install and Commission

Inbuilt colour LCD features to streamline installation and commissioning

- Easy trouble shooting
- Easy maintenance

Compatible with current Imagine

Efficiency, Wellbeing, Intelligence + Variety of add on devices

- Current router, DigiDim controls and loads
- Integration to BMS and Digital Services
- Designer Light Management programming software. Flexible and customisable programming to specific applications and needs

Futureproof with DALI-2

Certified with the latest standard for a futureproof system

- Certificated protocol and quality
- Helvar DALI-2 sensor and panels
- Multi-vendor Interoperability and supplied from Helvar



NEW 950 ROUTER Application Controller



GENERAL

- Certified DALI-2 Multi-master Application Controller
- 4 DALI Networks (subnets)
- Inbuilt DALI PSU per subnet
- LCD display for DALI network test and display alerts
- Built-in real time clock
- Compatible with Designer 5 software
- Compatible with other Helvar routers (905, 910, 920)
- Compatible with current integration options e.g. HelvarNet and Helvar Insights
- Compatible with Helvar DigiDim controls and loads
- Support for DALI-2 certified control devices
 - o Push Buttons (part 301)
 - o Absolute input devices (part 302)
 - o Occupancy Sensors (part 303)
 - o Light sensor (part 304)
- Support for up to 512 DALI addresses (64+64 per subnet)
- DALI-OUT current: 4 x 240 mA (guaranteed)
4 x 250mA (max)

HARDWARE

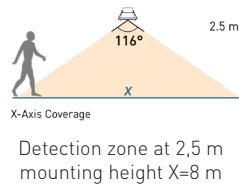
- Dimensions: 10U - 177 x 90 x 58mm (excl. connectors)
- Industrial grade processor, Quad core 1.6GHZ, 8GB
- Full colour and backlit LCD resolution 320x240px
- 2xRJ4510/100Mb/s Ethernet ports, separated NICs (1 port currently reserved for developer purposes only)

DALI STANDARD (IEC 62386)

- DALI-2 Multi-master Application Controller
 - o Part 101 System Components
 - o Part 103 Control Devices
 - o Part 301 Push Buttons
 - o Part 302 Absolute input devices
 - o Part 303 Occupancy Sensor
 - o Part 304 Light sensor
 - o Part 252 Energy data
 - o Part 253 Maintenance data
 - o Part 332 Feedback, LED only

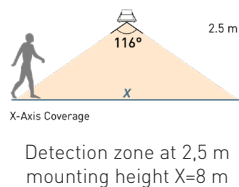


320D2, 320BD2, 320PD2 and 320PBD2 PIR sensors



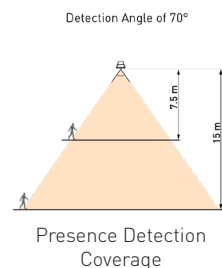
- DALI-2 certified input device
- PIR motion sensor
- Presence detection coverage at 2,5 m (Y=6,2 and X=8m)
- 320D2 and 320BD2 (anthracite grey) IP rating 30
- 320PD2 and 320PBD2 (anthracite grey) IP rating 65
- DALI Current Consumption: 10mA max

321D2, 321BD2, 321PD2 and 321PBD2 Multisensors



- DALI-2 certified input device
- Combination of PIR motion sensor and light sensor
- Presence detection coverage at 2,5 m (Y=6,2 and X=8m)
- 321D2 and 321BD2 (anthracite grey) IP rating 30
- 321PD2 and 321PBD2 (anthracite grey) IP rating 65
- DALI Current Consumption: 10mA max

322D2 and 322BD2 High Bay Multisensors



- DALI-2 certified input device
- Combination of PIR motion sensor and light sensor for very high ceilings
- 322D2 and 322BD2 (anthracite grey) IP rating 65
- Presence Detection Coverage at a mounting height:
 - o 7,5 m = Detection Pattern at Floor Level 10,5 m
 - o 15 m = Detection Pattern at Floor Level 21 m
- DALI Current Consumption: 10mA max

11xxD2 and 13xxD2 Modular Panel range



- DALI-2 certified input device
- 13xxD2 panels available with 6 different button arrangements
- 110D2 panels with one slider and 111D2 panels with two sliders
- Modules available: white (W) or anthracite grey (B)
- Frame options: white or black plastic, polished brass, stainless steel, painted white metal
- DALI Current Consumption: 10mA max

444D2 Mini Input Unit



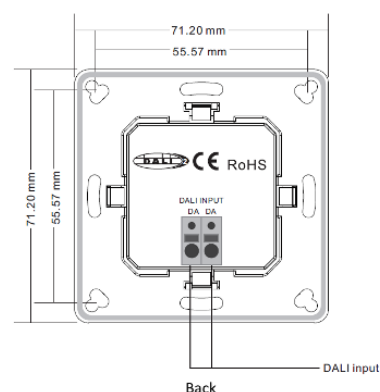
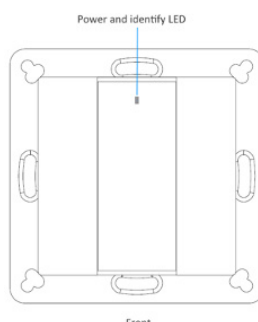
- DALI-2 certified input device
- Suitable for inclusion into all standard size back boxes
- Preconfigured with touch dimmer inputs for two groups
- Can be used with momentary or latching switches
- DALI Current Consumption: 10mA max

142WD2 2 Button



- Available button configurations: 2, 4, 6, 8
- Available colour: white or black (available 2023)
- Removable middle insert for local custom labeling options
- Compatible with alternative manufacturer's frames
- Middle LED for power indicator and identify function
- DALI Current Consumption: 10mA max
- DALI-2 certified input device

144WD2 4 Button



146WD2 6 Button

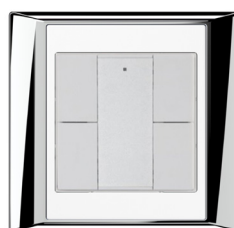


COMPATIBLE FRAME EXAMPLES from Alternative Manufacturers*

Standard European 55x55mm switch module design for compatibility with alternative frame options.

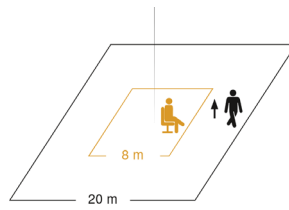


148WD2 8 Button



* not supplied by Helvar

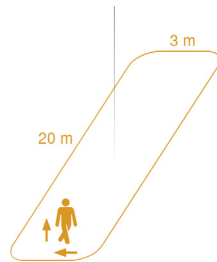
IR QUATTRO HD Open plan large area



Detection zone

- Sensor Technology: Passive Infrared
- Optimum mounting height: 2.8 m
- Small movement detection: 8 x 8 m
- Large movement detection: 20 x 20 m
- DALI Current Consumption: 8mA
- DALI-2 certified input device

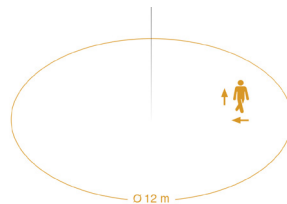
DUAL HF Corridors



Detection zone

- Sensor Technology: High Frequency, 5.8 Ghz
- Optimum mounting height: 2.8 m
- Small movement detection: 20 x 3 m
- Large movement detection: 20 x 3 m
- DALI Current Consumption: 14mA
- DALI-2 certified input device

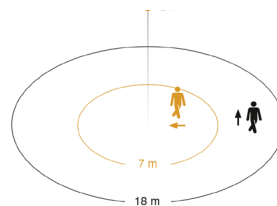
HF 360 Open plan areas with separators | Stairwells | WCs



Detection zone

- Sensor Technology: High Frequency, 5.8 Ghz
- Optimum mounting height: 2.5 m
- Small movement detection: 12 m Diameter
- Large movement detection: 12 m Diameter
- DALI Current Consumption: 10mA
- DALI-2 certified input device

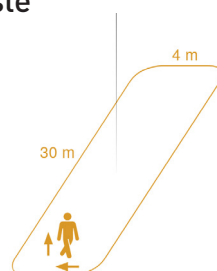
IS 3360 MX High bay open plan



Detection zone

- Sensor Technology: Passive Infrared
- Optimum mounting height: 12 m
- Small movement detection: 14 m Diameter
- Large movement detection: 36 m Diameter
- DALI Current Consumption: 6mA
- DALI-2 input device

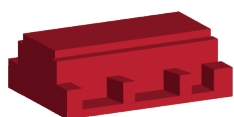
IS 345 MX High bay aisle



Detection zone

- Sensor Technology: Passive Infrared
- Optimum mounting height: 12 m
- Small movement detection: 30 x 4 m Diameter
- Large movement detection: 30 x 4 m Diameter
- DALI Current Consumption: 6mA
- DALI-2 certified input device

KEY SOLUTION COMPONENTS



DALI Routers



Sensors & Panels



GUIs








Apps



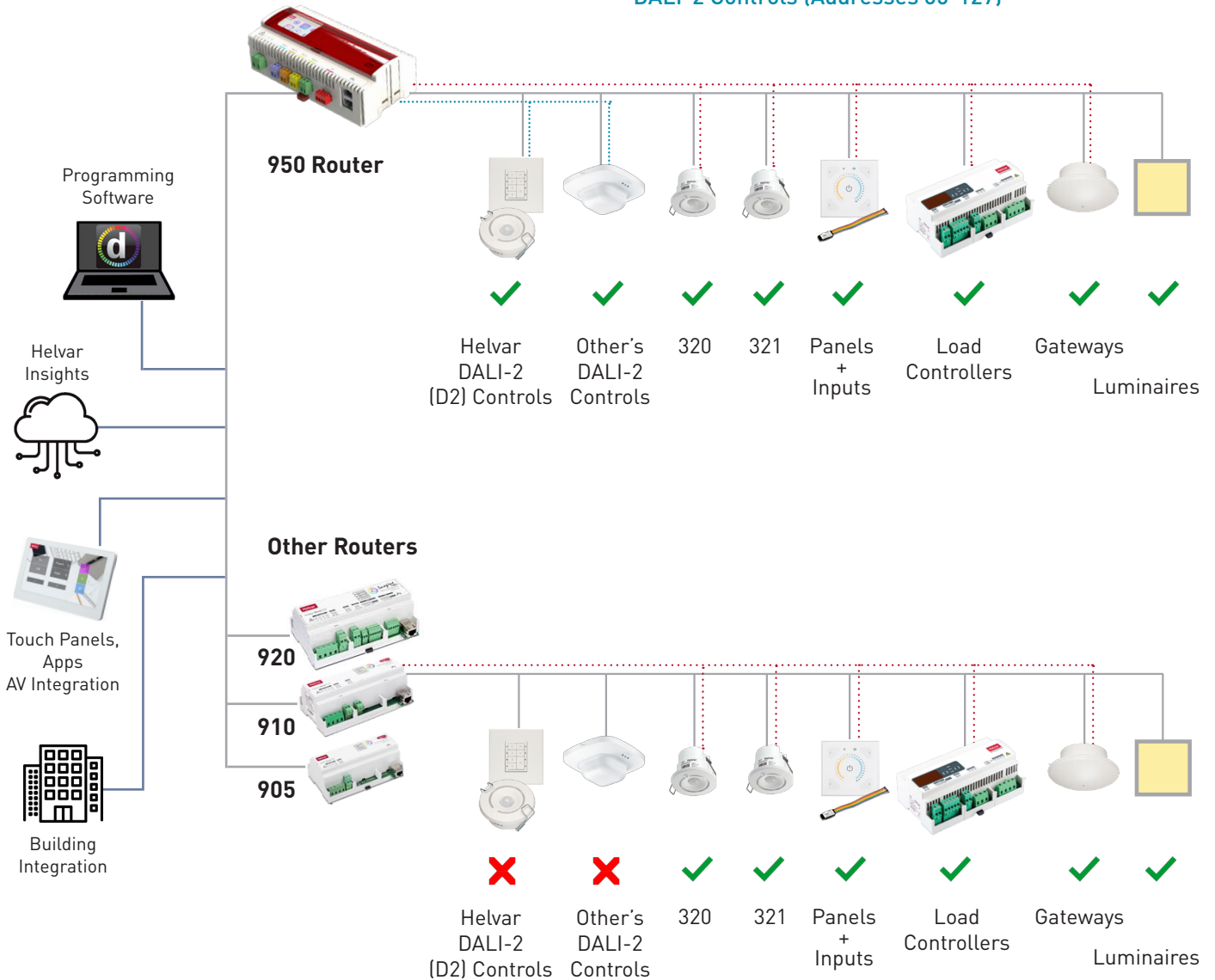
Integration

HELVAR APPLICATION CONTROLLERS AND PRODUCTS COMPATIBILITY

  	Helvar Application Controllers (Routers)	
	950  DALI-2 Multi Master Application Controller	905 910 920  DALI-2 Single Master Application Controller
Product Classifications	Supported	Supported
DALI Control Gear [i.e. luminaires]	✓	✓
DALI-2 Control Gear [i.e. luminaires]	✓	✓
DigiDim Helvar Control Devices	✓	✓
D2 Helvar DALI-2 Control Devices	✓	✗
Sensors		
DigiDim Helvar Sensors (examples: 320, 321, 322, 313, 314, 315, 317, 318)	✓	✓
D2 Helvar DALI-2 Sensors (examples 320D2, 321D2, 322D2)	✓	✗
Steinel DALI-2 Sensors from Helvar (example: IR Quattro HD Input device)	✓	✗
Button Panels and Inputs		
DigiDim Helvar Panels (examples: 13x, 16x, 19x ILLUSTRIS, 444)	✓	✓
D2 Helvar DALI-2 Panels and Inputs (examples 13xD2, 14xD2, 444D2)	✓	✗
Load controllers		
DigiDim Helvar Dimmers, Relays and Ballast Controllers (examples: 454, 478, 498)	✓	✓
Non Helvar DALI-2 controls (by other manufacturers)		
Only DALI-2 certified products and approved for compatibility by Helvar	Product dependent, ask local Helvar representative	✗

EXAMPLE SOLUTION DIAGRAM

- DALI-2 & DALI Lighting (Addresses 1-64)
- DigiDim Controls (Addresses 1-64)
- DALI-2 Controls (Addresses 65-127)



We're based in Finland, Sweden and the UK - but we work with Partners all over the world.

**FINLAND
HEADQUARTERS**
HELVAR OY AB
Keilaranta 5
FI-02150 Espoo
Tel. +358 9 5654 1

SWEDEN
Helvar AB
Åsögatan 155
SE-11632 Stockholm
Tel. +46 8 545 239 70

UNITED KINGDOM
Helvar Ltd
Hawley Mill, Hawley Road
Dartford, Kent, DA2 7SY
Tel. +44 1322 617 200

**FINLAND
LUMINAIRE COMPONENTS &
FACTORY**
Helvar Oy Ab
Yrittäjätie 23
FI-03600 Karkkila
Tel. +358 9 56 541

See what's new at helvar.com
helvar.com/contact-us/

Helvar